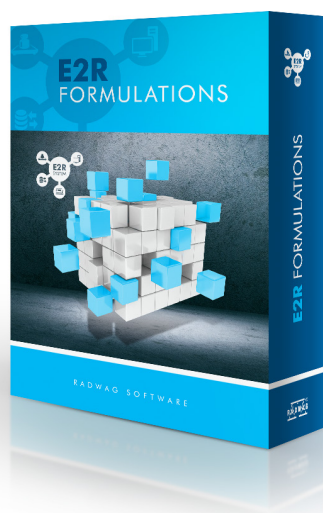


# E2R Formulations

E2R Formulation module enables creating formulations and managing raw material warehouses



## E2R Formulations

## Features

---

### **Functions carried out in cooperation with PUE HY10, PUE 7.1, PUE 5 terminals**

- Preview of carried out weighings
- Formulations realisation basing on Production orders
- Determining amount of each formulation ingredient
- Determining tolerance for each weighed ingredient
- Dosing up to specified mass
- Integration with Data Synchronisation Module
- Support of production orders
- Defining permissions for particular operators
- Realisation of production orders with batch portions
- Weighing remains of each batch portion
- Multiple weighing procedures of one ingredient
- Weighing each formulation ingredient on different weighing instrument/platform
- Entering serial number after each weighing
- Carrying out formulation with dosing function
- Realisation of production order on several weighing instruments
- Repeated realisation of formulation
- Formulations and Orders databases management
- Execution of a Production order divided into stages
- Stopping realisation of Formulations and Production orders
- Receipt printers and labellers operation
- Labelling directly via PUE 5 weighing indicator

### **Area of Use**

E2R Formulations module is especially useful in industries such as: construction, food, confectionary, chemical, pharmaceutical, metallurgical and anywhere where dispensing of products or ingredients in compliance with a given recipe is required. E2R Formulations module comprises E2R Synchronizer and E2R Manager software.

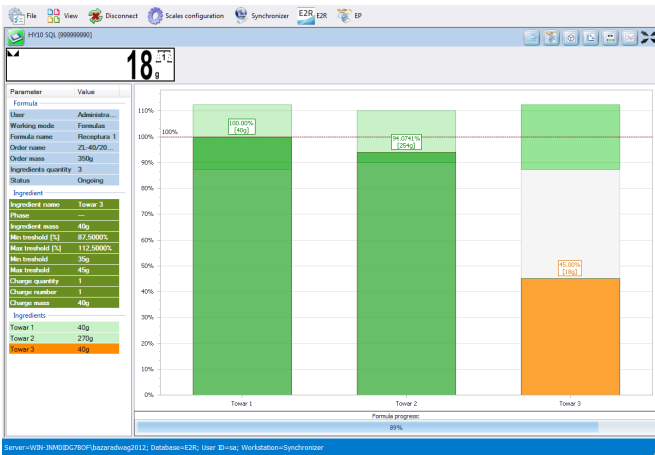
### **Integration with Weighing Indicators**

E2R Formulations can be integrated with the top-class RADWAG weighing terminals: PUE HY10, PUE 7.1 and PUE 5 enabling determining formulations and supporting raw material management related to formulations.

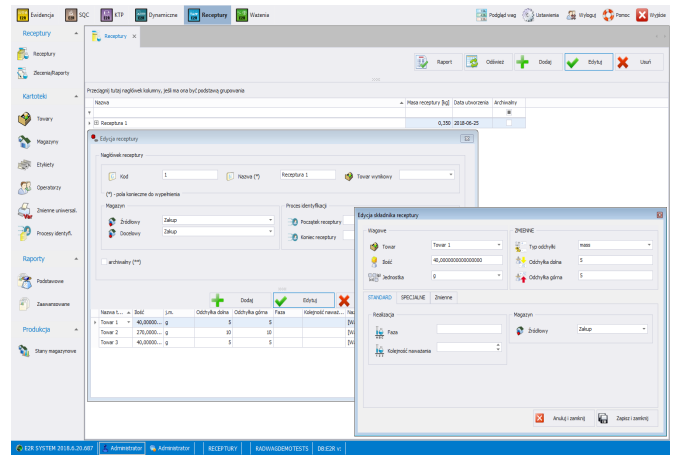
### **E2R Formulations module standard reports**

E2R Formulations module enables obtaining general and detailed reports from Formulations and Production Orders.

# Screenshots



Weighing records in E2R software



Formulation editing in E2R software

## Compatible with

### Weighing Instruments:

- TMX industrial scales
- HY10 industrial scales
- WLY laboratory balances
- WPY industrial scales

### Indicators and Terminals

- PUE HY10 weighing terminal
- PUE 7.1 weighing terminal
- PUE 5 weighing terminal

## Hardware requirements

### The minimum hardware requirements for the client computer or server being part of the weighing system consisting of max 10 weighing instruments

- Operating system: Windows 10 / 8 / 8.1 / 7 (excluding Starter version)
- MS SQL Server 2008 R2 Express or later version
- 2 GHz dual-core processor or faster
- Minimum 2 GB of operating memory
- Minimum 5 GB of free space on a hard drive
- 1280x1024 computer monitor
- DVD drive
- Printer operating in Windows environment
- Default system font size: 96 dpi

### The minimum hardware requirements for the client computer or server being part of the weighing system consisting above 10 weighing instruments

- Operating system: Windows 10 / 8 / 8.1 / 7 (excluding Starter version)
- MS SQL Server 2008 R2 Standard or later version
- Server Systems: Windows Server 2016, Windows Server 2008 SP2, Windows Server 2008 R2
- 2 GHz quad-core processor or faster
- Minimum 8 GB of operating memory
- Minimum 50 GB of free space on a hard drive
- 1280x1024 computer monitor
- DVD drive
- Printer operating in Windows environment
- Default system font size: 96 dpi