

# 1-Load-Cell Platforms

Unrivalled accuracy of weighing large loads in moist environment and at direct contact with water



PLC/F  
Max: 6 – 30 kg



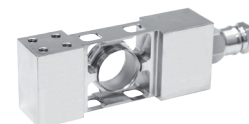
PL/D2  
Max: 0.6 – 6 kg



PL/H  
Max: 3 – 300 kg



PLC/C  
Max: 60 – 300 kg



Load cell of an increased ingress protection of IP 68/69K in HR platforms

## Features

### The Most Precise Weighing Results in Industrial Conditions

Advanced-class 1-load-cell weighing platforms ensure fast and precise mass measurement in challenging industrial conditions.

### Variety of Constructions

Waterproof HR platform offer two various design solutions which differ in IP rating (IP 67 or IP 68), used material (AISI 304 or AISI 316 stainless steel) and applied load cell protection technology.

### Reliability and Safety

Robust platform made of powder-coated steel designed for various weighing processes allows to weight different types of loads, ensuring durability and endurance in everyday use.

### Trouble-Free Operation at Direct Contact with Water

Operation in humid environment and in case of direct contact with water requires use of special weighing instruments. Waterproof HR platforms provide precise mass measurement and reliable, failure free operation under severe industrial conditions.

### Customizable Instrument

Numerous variants of weighing pan dimensions and broad range of maximum capacities enable selecting the best weighing instrument suiting specific requirements and needs.

## Technical Specifications

	PL0,6/1,5/D2	PL1,5/3/D2	PL3/6/D2
<b>Maximum capacity [Max]</b>	0.6/1.5 kg	1.5/3 kg	3/6 kg
<b>Platform material</b>	ABS plastic	ABS plastic	ABS plastic
<b>Weighing pan material</b>	stainless steel AISI 304	stainless steel AISI 304	stainless steel AISI 304
<b>Ingress protection - platform</b>	IP 43	IP 43	IP 43
<b>Operating temperature</b>	+10 ÷ +40 °C	+10 ÷ +40 °C	+10 ÷ +40 °C
<b>Relative humidity *</b>	40 ÷ 80%	40 ÷ 80%	40 ÷ 80%
<b>Transport and storage temperature</b>	-10 ÷ +50 °C	-10 ÷ +50 °C	-10 ÷ +50 °C
<b>Weighing pan dimensions</b>	195×195 mm	195×195 mm	195×195 mm
<b>Net weight</b>	2.7 kg	2.7 kg	2.7 kg
<b>Gross weight</b>	3.6 kg	3.6 kg	3.6 kg
<b>Platform packaging dimensions</b>	500×310×150 mm	500×310×150 mm	500×310×150 mm

\* non-condensing conditions

	PLC/6/F1	PLC/15/F1	PLC/30/F1
<b>Maximum capacity [Max]</b>	6 kg	15 kg	30 kg
<b>Platform material</b>	powder-coated steel St3S	powder-coated steel St3S	powder-coated steel St3S
<b>Weighing pan material</b>	stainless steel AISI 304	stainless steel AISI 304	stainless steel AISI 304
<b>Ingress protection - platform</b>	IP 65	IP 65	IP 65
<b>Operating temperature</b>	+10 ÷ +40 °C	+10 ÷ +40 °C	+10 ÷ +40 °C
<b>Relative humidity *</b>	40 ÷ 80%	40 ÷ 80%	40 ÷ 80%
<b>Transport and storage temperature</b>	-10 ÷ +50 °C	-10 ÷ +50 °C	-10 ÷ +50 °C
<b>Weighing pan dimensions</b>	300×300 mm	300×300 mm	300×300 mm
<b>Net weight</b>	4.6 kg	4.6 kg	4.6 kg
<b>Gross weight</b>	5.2 kg	5.2 kg	5.2 kg
<b>Platform packaging dimensions</b>	570×390×170 mm	570×390×170 mm	570×390×170 mm

\* non-condensing conditions

	PLC/60/C2	PLC/150/C2	PLC/300/C2
<b>Maximum capacity [Max]</b>	60 kg	150 kg	300 kg
<b>Platform material</b>	powder-coated steel St3S	powder-coated steel St3S	powder-coated steel St3S
<b>Weighing pan material</b>	stainless steel AISI 304	stainless steel AISI 304	stainless steel AISI 304
<b>Ingress protection - platform</b>	IP 65	IP 65	IP 65
<b>Operating temperature</b>	+10 ÷ +40 °C	+10 ÷ +40 °C	+10 ÷ +40 °C
<b>Relative humidity *</b>	40 ÷ 80%	40 ÷ 80%	40 ÷ 80%
<b>Transport and storage temperature</b>	-10 ÷ +50 °C	-10 ÷ +50 °C	-10 ÷ +50 °C
<b>Weighing pan dimensions</b>	400×500 mm	400×500 mm	400×500 mm
<b>Net weight</b>	10.1 kg	10.1 kg	10.1 kg
<b>Gross weight</b>	12.2 kg	12.2 kg	12.2 kg
<b>Platform packaging dimensions</b>	720×620×210 mm	720×620×210 mm	720×620×210 mm

\* non-condensing conditions

	PLC/150/C3	PLC/300/C3
Maximum capacity [Max]	150 kg	300 kg
Platform material	powder-coated steel St35	powder-coated steel St35
Weighing pan material	stainless steel AISI 304	stainless steel AISI 304
Ingress protection - platform	IP 65	IP 65
Operating temperature	+10 ÷ +40 °C	+10 ÷ +40 °C
Relative humidity *	40 ÷ 80%	40 ÷ 80%
Transport and storage temperature	-10 ÷ +50 °C	-10 ÷ +50 °C
Weighing pan dimensions	500x700 mm	500x700 mm
Net weight	20.9 kg	20.9 kg
Gross weight	24.7 kg	24.7 kg
Platform packaging dimensions	850x800x270 mm	850x800x270 mm

\* non-condensing conditions

	PL/3/H1	PL/6/H2	PL/15/H2	PL/15/H3
Maximum capacity [Max]	3 kg	6 kg	15 kg	15 kg
Platform material	stainless steel AISI 304	stainless steel AISI 304	stainless steel AISI 304	stainless steel AISI 304
Weighing pan material	stainless steel AISI 304	stainless steel AISI 304	stainless steel AISI 304	stainless steel AISI 304
Ingress protection - platform	IP 68	IP 68	IP 68	IP 68
Operating temperature	+10 ÷ +40 °C	+10 ÷ +40 °C	+10 ÷ +40 °C	+10 ÷ +40 °C
Relative humidity *	40 ÷ 80%	40 ÷ 80%	40 ÷ 80%	40 ÷ 80%
Transport and storage temperature	-10 ÷ +50 °C	-10 ÷ +50 °C	-10 ÷ +50 °C	-10 ÷ +50 °C
Weighing pan dimensions	150x200 mm	250x300 mm	250x300 mm	410x410 mm
Net weight	3.1 kg	5.5 kg	5.5 kg	5.5 kg
Gross weight	3.9 kg	7.2 kg	7.2 kg	7.2 kg
Platform packaging dimensions	290x270x240 mm	580x320x360 mm	580x320x360 mm	670x510x330 mm

\* non-condensing conditions

	PL/30/H3	PL/60/H3	PL/150/H3	PL/60/H4
Maximum capacity [Max]	30 kg	60 kg	150 kg	60 kg
Platform material	stainless steel AISI 304	stainless steel AISI 304	stainless steel AISI 304	stainless steel AISI 304
Weighing pan material	stainless steel AISI 304	stainless steel AISI 304	stainless steel AISI 304	stainless steel AISI 304
Ingress protection - platform	IP 68	IP 68	IP 68	IP 68
Operating temperature	+10 ÷ +40 °C	+10 ÷ +40 °C	+10 ÷ +40 °C	+10 ÷ +40 °C
Relative humidity *	40 ÷ 80%	40 ÷ 80%	40 ÷ 80%	40 ÷ 80%
Transport and storage temperature	-10 ÷ +50 °C	-10 ÷ +50 °C	-10 ÷ +50 °C	-10 ÷ +50 °C
Weighing pan dimensions	410x410 mm	410x410 mm	410x410 mm	500x500 mm
Net weight	7.5 kg	7.5 kg	7.5 kg	15.6 kg
Gross weight	10.2 kg	10.2 kg	10.2 kg	19.1 kg
Platform packaging dimensions	670x510x330 mm	670x510x330 mm	670x510x330 mm	840x600x400 mm

\* non-condensing conditions

	PL/150/H4	PL/60/H3/5	PL/150/H3/5	PL/60/H5
<b>Maximum capacity [Max]</b>	150 kg	60 kg	150 kg	60 kg
<b>Platform material</b>	stainless steel AISI 304	stainless steel AISI 304	stainless steel AISI 304	stainless steel AISI 304
<b>Weighing pan material</b>	stainless steel AISI 304	stainless steel AISI 304	stainless steel AISI 304	stainless steel AISI 304
<b>Ingress protection - platform</b>	IP 68	IP 68	IP 68	IP 68
<b>Operating temperature</b>	+10 ÷ +40 °C	+10 ÷ +40 °C	+10 ÷ +40 °C	+10 ÷ +40 °C
<b>Relative humidity *</b>	40 ÷ 80%	40 ÷ 80%	40 ÷ 80%	40 ÷ 80%
<b>Transport and storage temperature</b>	-10 ÷ +50 °C	-10 ÷ +50 °C	-10 ÷ +50 °C	-10 ÷ +50 °C
<b>Weighing pan dimensions</b>	500x500 mm	400x600 mm	400x600 mm	600x600 mm
<b>Net weight</b>	15.6 kg	17.3 kg	17.3 kg	18.7 kg
<b>Gross weight</b>	19.1 kg	20.8 kg	20.8 kg	22.7 kg
<b>Platform packaging dimensions</b>	840x600x400 mm	680x490x230 mm	680x490x230 mm	840x700x400 mm

\* non-condensing conditions

	PL/150/H5	PL/300/H5	PL/150/H6	PL/300/H6
<b>Maximum capacity [Max]</b>	150 kg	300 kg	150 kg	300 kg
<b>Platform material</b>	stainless steel AISI 304	stainless steel AISI 304	stainless steel AISI 304	stainless steel AISI 304
<b>Weighing pan material</b>	stainless steel AISI 304	stainless steel AISI 304	stainless steel AISI 304	stainless steel AISI 304
<b>Ingress protection - platform</b>	IP 68	IP 68	IP 68	IP 68
<b>Operating temperature</b>	+10 ÷ +40 °C	+10 ÷ +40 °C	+10 ÷ +40 °C	+10 ÷ +40 °C
<b>Relative humidity *</b>	40 ÷ 80%	40 ÷ 80%	40 ÷ 80%	40 ÷ 80%
<b>Transport and storage temperature</b>	-10 ÷ +50 °C	-10 ÷ +50 °C	-10 ÷ +50 °C	-10 ÷ +50 °C
<b>Weighing pan dimensions</b>	600x600 mm	600x600 mm	800x800 mm	800x800 mm
<b>Net weight</b>	18.7 kg	18.7 kg	39.7 kg	39.7 kg
<b>Gross weight</b>	22.7 kg	22.7 kg	42.4 kg	42.4 kg
<b>Platform packaging dimensions</b>	840x700x400 mm	840x600x400 mm	1250x820x270 mm	1250x820x270 mm

\* non-condensing conditions

	PL/3/HR2	PL/6/HR2	PL/15/HR2
<b>Maximum capacity [Max]</b>	3 kg	6 kg	15 kg
<b>Platform material</b>	stainless steel AISI 316	stainless steel AISI 316	stainless steel AISI 316
<b>Weighing pan material</b>	stainless steel AISI 316	stainless steel AISI 316	stainless steel AISI 316
<b>Ingress protection - platform</b>	IP 68 / 69K	IP 68 / 69K	IP 68 / 69K
<b>Operating temperature</b>	+10 ÷ +40 °C	+10 ÷ +40 °C	+10 ÷ +40 °C
<b>Relative humidity *</b>	40 ÷ 80%	40 ÷ 80%	40 ÷ 80%
<b>Transport and storage temperature</b>	-10 ÷ +50 °C	-10 ÷ +50 °C	-10 ÷ +50 °C
<b>Weighing pan dimensions</b>	250x300 mm	250x300 mm	250x300 mm
<b>Net weight</b>	6 kg	6 kg	6 kg
<b>Gross weight</b>	7.7 kg	7.7 kg	7.7 kg
<b>Platform packaging dimensions</b>	580x320x360 mm	580x320x360 mm	580x320x360 mm

\* non-condensing conditions

	PL/15/HR3	PL/30/HR3	PL/60/HR3	PL/150/HR3
<b>Maximum capacity [Max]</b>	15 kg	30 kg	60 kg	150 kg
<b>Platform material</b>	stainless steel AISI 316	stainless steel AISI 316	stainless steel AISI 316	stainless steel AISI 316
<b>Weighing pan material</b>	stainless steel AISI 316	stainless steel AISI 316	stainless steel AISI 316	stainless steel AISI 316
<b>Ingress protection - platform</b>	IP 68 / 69K	IP 68 / 69K	IP 68 / 69K	IP 68 / 69K
<b>Operating temperature</b>	+10 ÷ +40 °C	+10 ÷ +40 °C	+10 ÷ +40 °C	+10 ÷ +40 °C
<b>Relative humidity *</b>	40 ÷ 80%	40 ÷ 80%	40 ÷ 80%	40 ÷ 80%
<b>Transport and storage temperature</b>	-10 ÷ +50 °C	-10 ÷ +50 °C	-10 ÷ +50 °C	-10 ÷ +50 °C
<b>Weighing pan dimensions</b>	410x410 mm	410x410 mm	410x410 mm	410x410 mm
<b>Net weight</b>	8 kg	8 kg	8 kg	8 kg
<b>Gross weight</b>	10.7 kg	10.7 kg	10.7 kg	10.7 kg
<b>Platform packaging dimensions</b>	670x510x330 mm	670x510x330 mm	670x510x330 mm	670x510x330 mm

\* non-condensing conditions

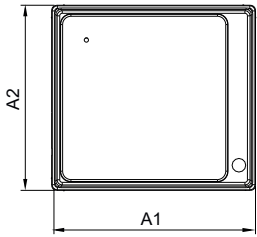
	PL/60/HR4	PL/150/HR4	PL/60/HR3/5	PL/150/HR3/5
<b>Maximum capacity [Max]</b>	60 kg	150 kg	60 kg	150 kg
<b>Platform material</b>	stainless steel AISI 316	stainless steel AISI 316	stainless steel AISI 316	stainless steel AISI 316
<b>Weighing pan material</b>	stainless steel AISI 316	stainless steel AISI 316	stainless steel AISI 316	stainless steel AISI 316
<b>Ingress protection - platform</b>	IP 68 / 69K	IP 68 / 69K	IP 68 / 69K	IP 68 / 69K
<b>Operating temperature</b>	+10 ÷ +40 °C	+10 ÷ +40 °C	+10 ÷ +40 °C	+10 ÷ +40 °C
<b>Relative humidity *</b>	40 ÷ 80%	40 ÷ 80%	40 ÷ 80%	40 ÷ 80%
<b>Transport and storage temperature</b>	-10 ÷ +50 °C	-10 ÷ +50 °C	-10 ÷ +50 °C	-10 ÷ +50 °C
<b>Weighing pan dimensions</b>	500x500 mm	500x500 mm	400x600 mm	400x600 mm
<b>Net weight</b>	14.4 kg	14.4 kg	14.9 kg	14.9 kg
<b>Gross weight</b>	17.9 kg	17.9 kg	18.4 kg	18.4 kg
<b>Platform packaging dimensions</b>	840x600x400 mm	840x600x400 mm	680x490x230 mm	680x490x230 mm

\* non-condensing conditions

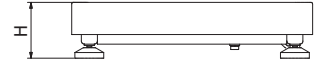
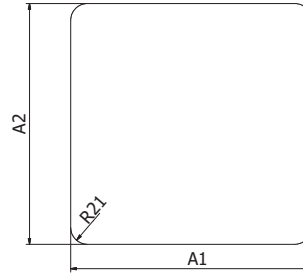
	PL/60/HR5	PL/150/HR5	PL/300/HR5
<b>Maximum capacity [Max]</b>	60 kg	150 kg	300 kg
<b>Platform material</b>	stainless steel AISI 316	stainless steel AISI 316	stainless steel AISI 316
<b>Weighing pan material</b>	stainless steel AISI 316	stainless steel AISI 316	stainless steel AISI 316
<b>Ingress protection - platform</b>	IP 68 / 69K	IP 68 / 69K	IP 68 / 69K
<b>Operating temperature</b>	+10 ÷ +40 °C	+10 ÷ +40 °C	+10 ÷ +40 °C
<b>Relative humidity *</b>	40 ÷ 80%	40 ÷ 80%	40 ÷ 80%
<b>Transport and storage temperature</b>	-10 ÷ +50 °C	-10 ÷ +50 °C	-10 ÷ +50 °C
<b>Weighing pan dimensions</b>	600x600 mm	600x600 mm	600x600 mm
<b>Net weight</b>	17.1 kg	17.1 kg	17.1 kg
<b>Gross weight</b>	21.1 kg	21.1 kg	21.1 kg
<b>Platform packaging dimensions</b>	840x700x400 mm	840x700x400 mm	840x700x400 mm

\* non-condensing conditions

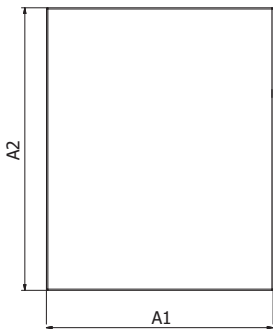
## Dimensions



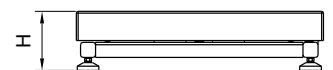
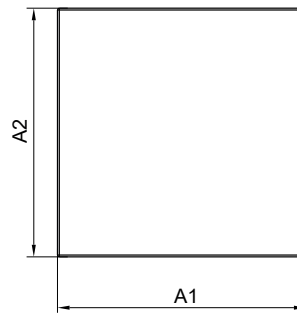
PL/D2



PLC/F1



PLC/C2  
PLC/C3



PL/H  
PL/HR

Platform type	A1	A2	H
PL/D2	238	216	82±3
PLC/F1	300	300	70±3
PLC/C2	402	502	103±3
PLC/C3	701	501	130±5
PL/H1 / PL/HR1	150	200	85±3
PL/H2 / PL/HR2	250	300	103±3
PL/H3 / PL/HR/3	410	410	98±3
PL/H3/5 / PL/HR/3/5	400	600	98±3
PL/H4 / PL/HR/4	500	500	155±3
PL/H5 / PL/HR/5	600	600	155±3
PL/H6	800	800	135±3

dimensions in mm

## Accessories

### Compatible weighing terminals

- PUE 5.15 / PUE 5.19
- PUE 7.1
- PUE HY10
- PUE C/31
- PUE C/31H
- PUE C32
- PUE C/41H