



ITKB-12-01-12-20-EN

Quick Start

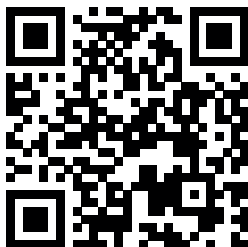
# Indicator

---

- PUE HX7

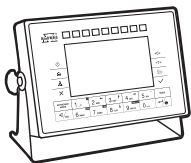
To view the full user manual, go to the website or scan the QR code:

---



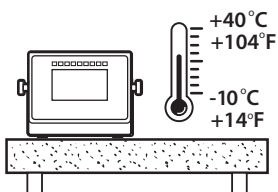
[radwag.com/en/manuals/B3G](http://radwag.com/en/manuals/B3G)

# 1. CONTENT

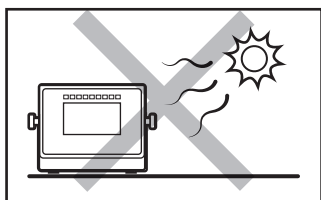


Indicator  
x1

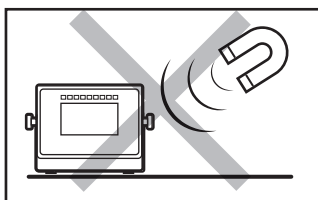
## 2. NOTES AND WARNINGS



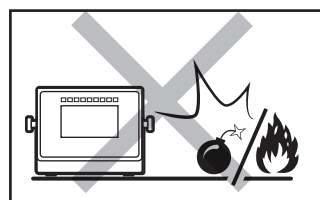
Operate the indicator in a room where the temperature ranges between -10–40 °C (14–104 °F) and where the relative humidity is below 80%. Potential temperature change shall occur gradually and slowly.



Place the scale away from heat sources. Avoid exposing the scale to the sunlight.



Avoid exposing the scale to the influence of a magnetic field. Do not weigh magnetic substances.



Not intended for use within EX zones. Not intended for weighing explosive or flammable substances.

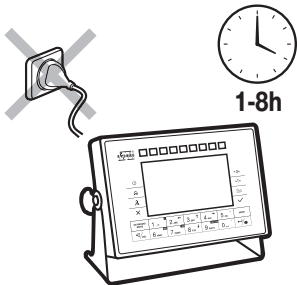
## 3. PREPARING FOR WORK



Place the indicator on the workstation and leave it until it reaches ambient temperature.

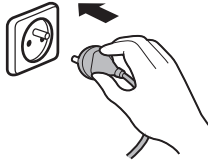
### 3.1. Indicator Temperature Stabilization

1



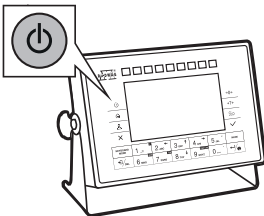
Prior to switching the indicator on let it reach room temperature (estimated stabilization time: 8 hours).

2



Connect the power cord to the mains.

### 3.2. Indicator Start-Up



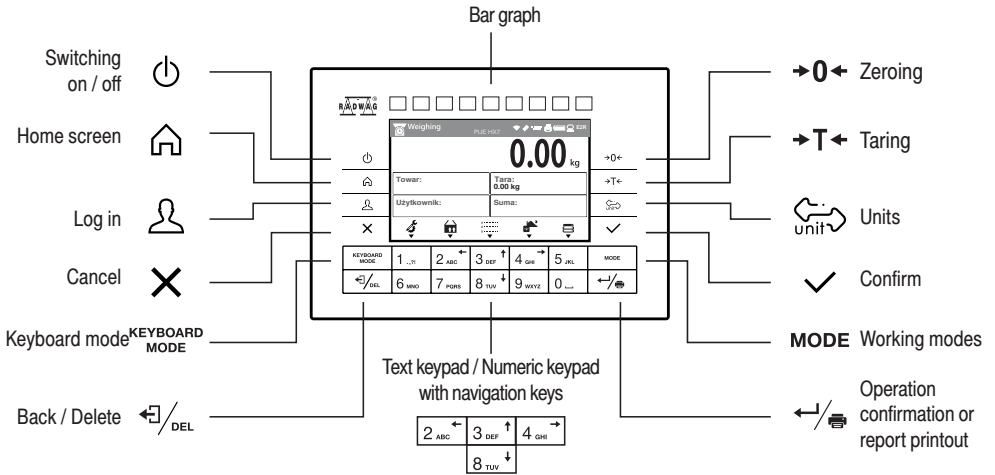
Press ON / OFF key to start the indicator.



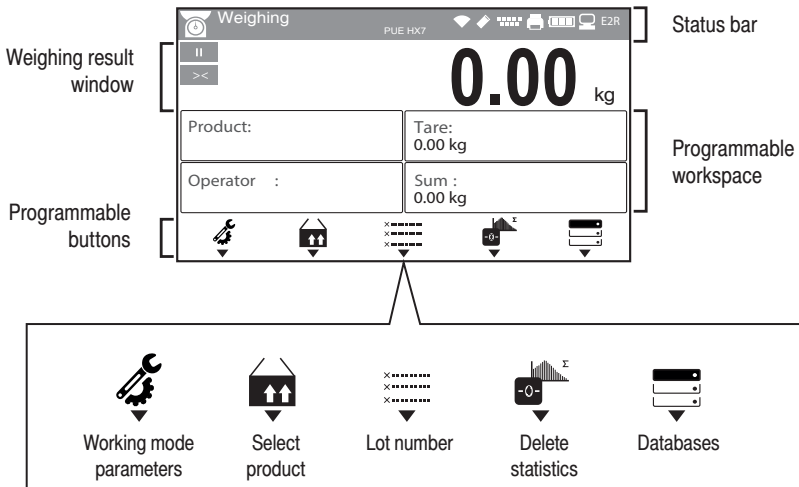
The indicator is ready for operation!

# 4. PANEL AND SCREEN

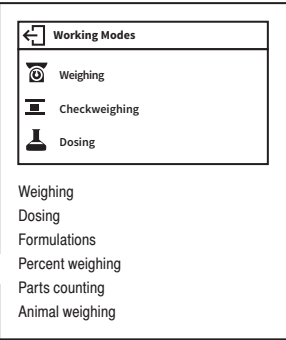
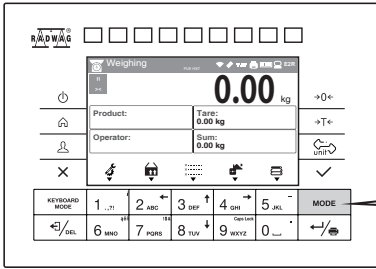
## 4.1. Keypad



## 4.2. Home Screen



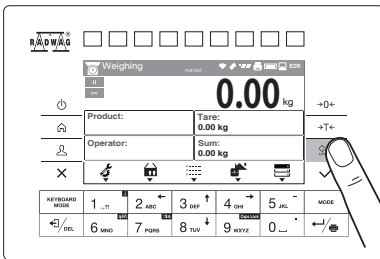
## 4.3. Working Modes



Press **MODE** key to enter Working Modes menu.

Using **↑** **↓** keys select working mode and press **✓** key to confirm.

## 4.4. Unit Selection



The indicator enables selecting the following mass units:

- Gram [g]
- Kilogram [kg]
- Carat [ct]
- Ounce [oz]
- Pound [lb]
- Newton [N]
- Custom unit 1 [U1]
- Custom unit 2 [U2]

Press **UNIT** key to change the mass unit.

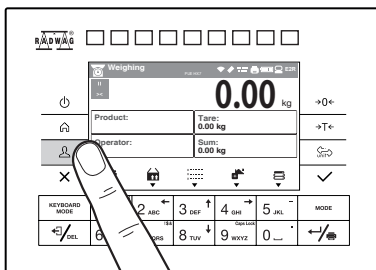
## 5. SETTINGS



Some scale settings are only available to the Administrator. Prior to setting scale parameters log in as the Administrator.

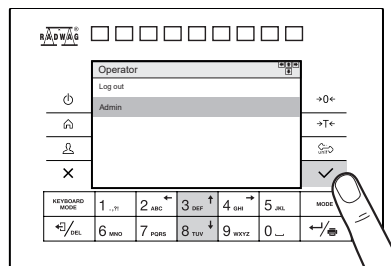
### 5.1. Administrator's Logging In

1

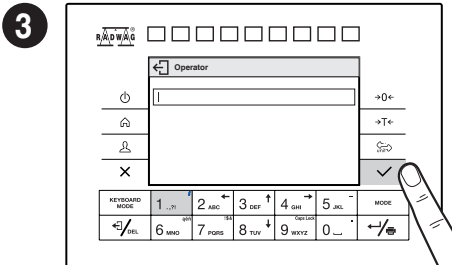


Press **Operator** key to open „Operator” menu.

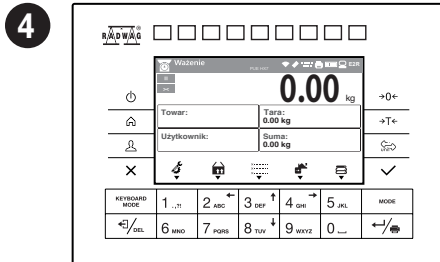
2



A list of operators is displayed. Press **↑** **↓** keys to select "Administrator" and press **✓** key to confirm.

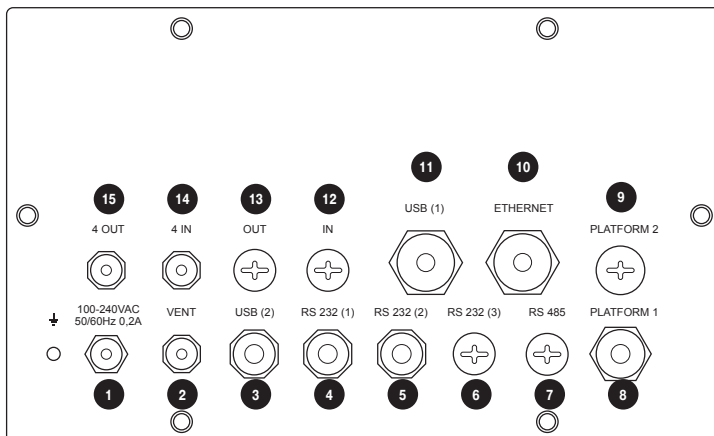


When the field for filling the password in is opened, confirm the empty field by pressing key.



You have logged as the administrator.

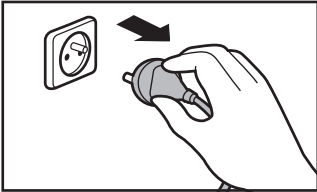
## 6. CONNECTING PERIPHERALS



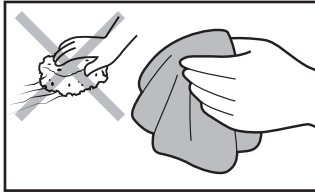
1	Power cord cable gland
2	Valve
3	USB 2 M12 4P connector (option)
4	RS232 M12 8P connector
5	RS232 M12 8P connector (option)
6	RS232 M12 8P connector (option)
7	RS485 M12 8P connector (option)
8	Cable gland for a cable of a weighing platform
9	Cable gland for a cable of a weighing platform 2 (option)
10	ETHERNET RJ45 connector
11	USB connector
12	IN connector for additional interfaces (PROFIBUS)
13	OUT connector for additional interfaces (PROFIBUS, analog outputs)
14	Digital 4OUT M12 8P connector
15	Digital 4IN M12 8P connector

## 7. CLEANING AND MAINTENANCE

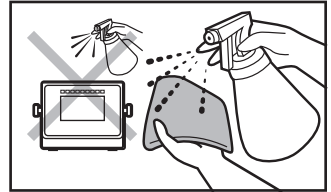
### 7.1. Notes and Warnings



Prior to cleaning it is necessary to disconnect the indicator from the mains. Unplug the connector from the electrical socket. Unused communication interfaces must be covered with hole plugs.



For cleaning use only soft cloths made of microfiber. Do not use any abrasive cloths or any material that may scratch the surface!



Apply the cleanser onto the cloth first. Avoid applying the cleanser directly onto the device!



**Avoid using aggressive cleaning agents (e.g. solvents, cleansers containing chlorine, corrosive substances and bleach).**



**Avoid using cleansers containing abrasive substances or scouring preparations.**



**Avoid using intense water jet for cleaning.**

### 7.2. Cleaning Tips

- STAINLESS STEEL ELEMENTS, ALUMINUM can be cleaned with a soft cloth slightly moistened with a solution of water and a mild detergent (e.g. soap or dishwashing liquid).
- Plastic elements can be cleaned with a soft cloth slightly moistened with a solution of water and a mild detergent (e.g. soap or dishwashing liquid).
- Dry cleaned elements using soft and dry cloth or use dust-free paper towel to absorb the remaining moisture.
- Do not install the components until they are completely dry.











[www.radwag.com](http://www.radwag.com)