

10.1" touchscreen  
Screen customization  
Remote control of terminal's settings



# PUE HY10 Terminal

ADVANCED WEIGHING SOLUTION FOR INDUSTRY

# PUE HY10

Quality and precision in challenging working conditions  
Customization to production process requirements



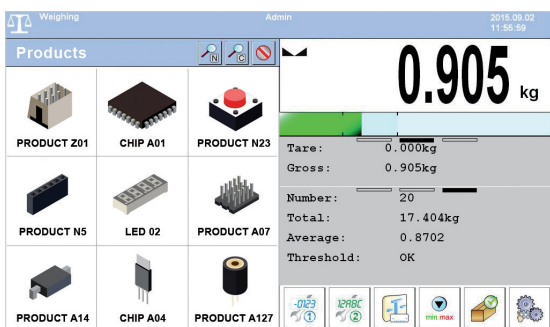
Hermetic stainless steel housing guaranteeing faultless operation in humid and dusty environment.



10.1" colour capacitive display of 1024x600 pixels resolution providing good ergonomics



Complex customization option, i.e. self-designed screen layout and menu.



HY 10 terminal features pictograms database providing you with icons that can be assigned to weighed products.

## Screen Customization

PUE HY10 screen is customizable to make it suit your individual preferences and specific requirements of any production process.

## Production Processes Editor

'Traceability Processes' function enables you to precisely program weighing process course. As an operator you are guided step by step therefore there is no need for you to worry that any operation might be omitted.

## Remote Setup

The remote setup is a cutting-edge solution. Now you can set PUE HY10 terminal from anywhere in the world. All you need to connect to the terminal is Internet and 'Parameters Editor' application.

## Applications in Line with Industry Requirements

PUE HY10 software makes the terminal possible to be used for vast range of industrial applications, e.g. labelling, dosing, parts counting, formulations, prepackaged goods control (PGC), statistic quality control.

## Reliability and Hygiene in Challenging Conditions

Stainless steel mechanical design and IP68/69 in-use facilitate terminal operation under challenging industrial conditions. These two characteristics make the terminal meet high hygiene standards for food and pharmaceutical industries.

## Managing Multi-Platform Systems

PUE HY10 terminal can support operation of 6 weighing platforms (including 2 load cell ones). It offers connecting laboratory balances and weighing modules.

## Databases and Ease of Archiving

Large PUE HY10 terminal database facilitates archiving the results of your work and reports. The data can be exchanged between terminals. Data import and export options are at your disposal.



Display	10.1" capacitive colour touchscreen
Ingress protection	IP68 (1h max) / 69
Housing	AISI304 Stainless Steel
Weighing platforms quantity	1 (standard), up to 6 (option)
System	Microsoft Windows 7 Embedded Compact
Memory	256 MB DDR2, 16 GB - micro SD card
Processor	Dual Core 1 GHz
Communication Interfaces	2xUSB, 2xRS 232, RS 485, Ethernet, 4xIN, 4xOUT, Modbus RTU
Optional	Profibus Module, Profinet Module, AN module, 12IN module, Wi-Fi®, Module of an additional A/D DP4 converter

Wi-Fi® is a registered trademark of Wi-Fi Alliance.