

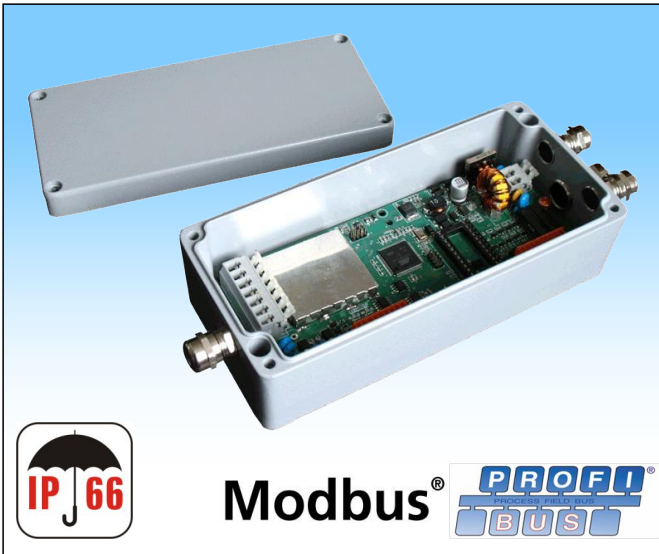
WEIGHING MODULE MW-01



release date 22-07-2014



2 years warranty period



Weighing module MW-01 has been designed, to meet ever growing needs of the market and customers. The module is intended for building industrial, load cell scales, where weighing platforms are located in significant distance from measuring indicator. Depending on the needs, communication with the module can be conducted via RS485, RS232, Ethernet, Profibus. Module MW-01 can cooperate with measuring indicators or PC.

Weighing module MW-01 enables full operation of **PLC** programmable controllers, which communicate through communication **protocol Modbus class 0**.

The weighing module in network utilizing **Modbus standard** operates as slave, on one of available interfaces, RS 485 or Ethernet.

It operates in one of three modes:

- RS484 - RTU, (hardware interface RS485, frame RTU),
- TCP/IP - RTU, (hardware interface Ethernet, frame RTU),
- TCP/IP - Open ModBus, (hardware interface Ethernet, frame Open Modbus).

MAJOR APPLICATIONS OF THE WEIGHING MODULE:

- In weighing systems which may be supervised by master computer system thanks to communication realized via Ethernet interface
- Option of connecting a higher number of platforms to weighing indicators
- Application in checkweighers owing to high processing power of up to 1000 measurements per second
- Cooperation with industrial automation systems through implementation of communication protocol MODBUS

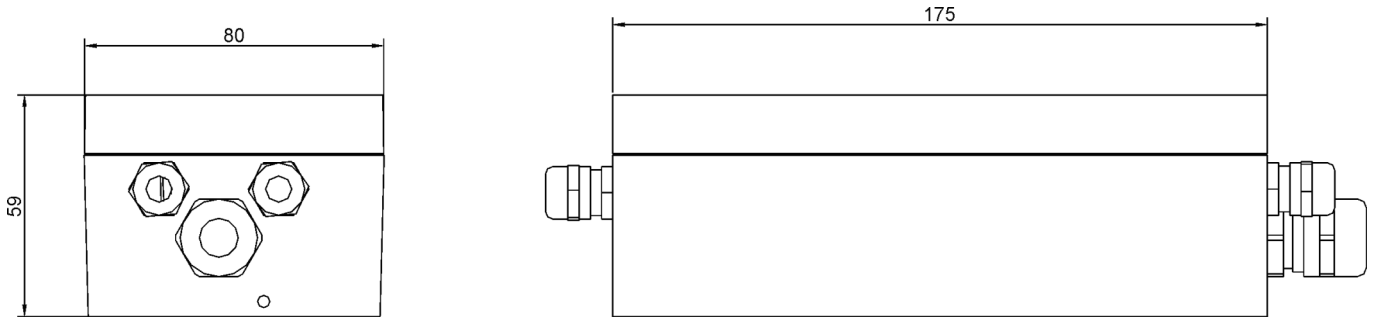
TECHNICAL PARAMETERS:

	MW-01 ver. 1	MW-01 ver.2
Interface	RS232, RS485, Ethernet	RS232, Profibus
Casing		Mild steel
OIML Class		III
Working temperature		-10° ÷ +40 °C
IP rating		IP 66
Power supply		8 ÷ 30V DC
Maximal quantity of verifying units		10 000
Maximal increase of signal		19,5 [mV]
Minimal voltage on one verifying unit		0,5 [µV]
Impedance range of load cell		80 ÷ 1200 [Ω]
Voltage on load cell		5V DC
Connection of load cell		4 or 6 cables + shielding
Quantity of platforms		1
Speed of transmission		57600 bps
Multi-range possibility		YES
Housing dimensions		80 x 59 x 175 mm
Number of IN / OUT		2 x IN / 2 x OUT

PARAMETERS IN/OUT	OUT 1 ÷ OUT 2	IN 1 ÷ IN 2
Type IN / OUT	Read relay type NO	Optoisolated
Wire gauge		0,14 ÷ 0,5 mm ²
Maximum constant current switching	200 mA	
Maximum forward voltage	50 V DC	
Control voltage range		5 ÷ 24 V DC

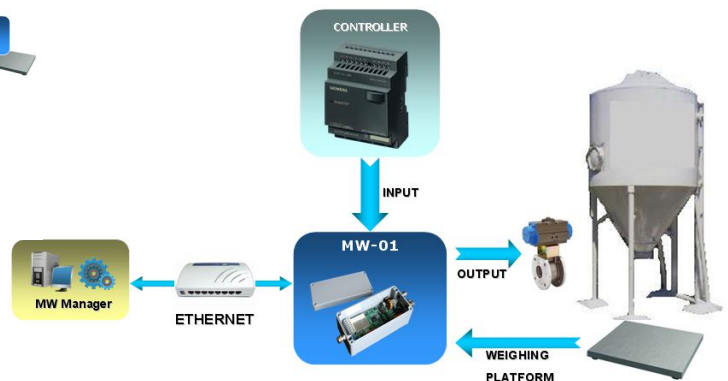
CONSTRUCTION:

Weighing module features metal housing. Signal cables are mounted through a cable gland. Communication with external peripherals is realized through one of five interfaces: RS485, RS232, Ethernet, Profibus.



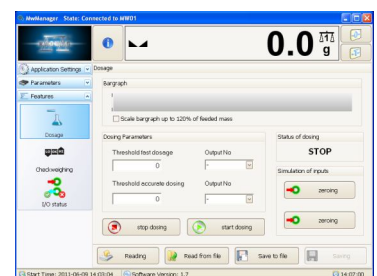
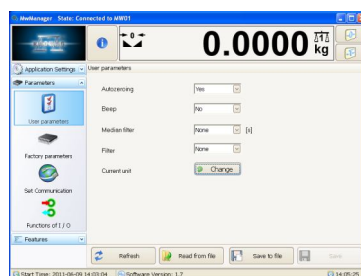
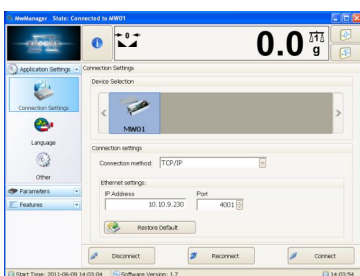
Possibility of using the module MW-01

The example application module MW-01



SOFTWARE:

Operation of weighing module is possible from a PC with the software "MW Manager". Program allows calibration of weighing module (i.e. determining: start mass, calibration coefficient, gravitational correction, linearity correction), mass readout, tarring, zeroing, filter settings.



Download the program from www.radwag.com

ACCESSORIES:

- Additional LCD display