



More information on the website  
[radwag.com/en/info,w1,T45](http://radwag.com/en/info,w1,T45)

## H315.2K.300/600 Overhead Track Scale, H315.2K.300/600H Overhead Track Scale



H315.2K.300/600 Overhead Track Scale  
 H315.2K.300/600H Overhead Track Scale

The drawings, photos and graphics used are for illustrative purposes only.

## Functions



Plus/Minus Control



Percent Weighing



Totalizing



Parts counting



Internal battery



Peak hold



Newton unit measurement



Animal weighing

## Datasheet

	H315.2K.300/600H Overhead Track Scale	H315.2K.300/600 Overhead Track Scale
<b>Metrological parameters</b>		
<b>Maximum capacity [Max]</b>	300 / 600 kg	300 / 600 kg
<b>Minimum load</b>	2 kg	2 kg
<b>Readability [d]</b>	0,1 / 0,2 kg	0,1 / 0,2 kg
<b>Tare range</b>	-600 kg	-600 kg
<b>OIML Class</b>	III	III
<b>Physical parameters</b>		
<b>Display</b>	LCD (backlit)	LCD (backlit)
<b>Detection line span</b>	L= 800 mm (min. 200 mm)	L= 800 mm (min. 200 mm)
<b>Construction</b>		
<b>Protection class</b>	IP 67 construction, IP 68 (1h max)/69 terminal	IP 67 construction, IP 68 (1h max)/69 terminal
<b>Construction</b>	Stainless steel AISI304	galvanized
<b>Communication interface</b>		
<b>Communication interface</b>	RS232, USB	RS232, USB
<b>Optional interfaces</b>	RS232 or RS485 or 4IN/4OUT or Ethernet or analog output 4-20 mA	RS232 or RS485 or 4IN/4OUT or Ethernet or analog output 4-20 mA
<b>Electrical parameters</b>		
<b>Power supply</b>	100 – 240 V AC 50/60 Hz	100 – 240 V AC 50/60 Hz
<b>Optional power supply</b>	internal rechargeable battery	internal rechargeable battery
<b>Operation time on batteries</b>	max 7h	max 7h
<b>Environmental conditions</b>		
<b>Operating temperature</b>	-10 – +40 °C	-10 – +40 °C
<b>Relative humidity</b>	10% – 85% RH no condensation	10% – 85% RH no condensation



Additional fee for verification



## Accessories (Additional Fee)

RS 232 cables (scale - printer)

Displays

RS 232 cables (scale - Ethernet)

RS 232, RS 485 cables

Power Adapters

RS 232 – Ethernet Converter

USB adapter

Receipt Printer

USB cable (scale - printer)

Stands, wall mounting kits and mounting brackets

RS 232 – USB Converter

RS 232, RS 485 cables

## Software (Additional Fee)

RAD-KEY

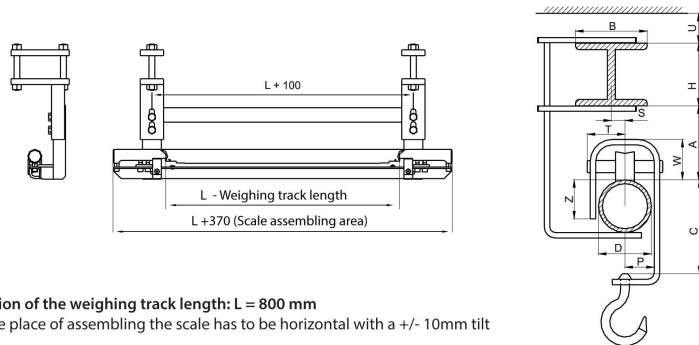
R-LAB

R Panel

Scales Editor 2.1

## Device dimensions

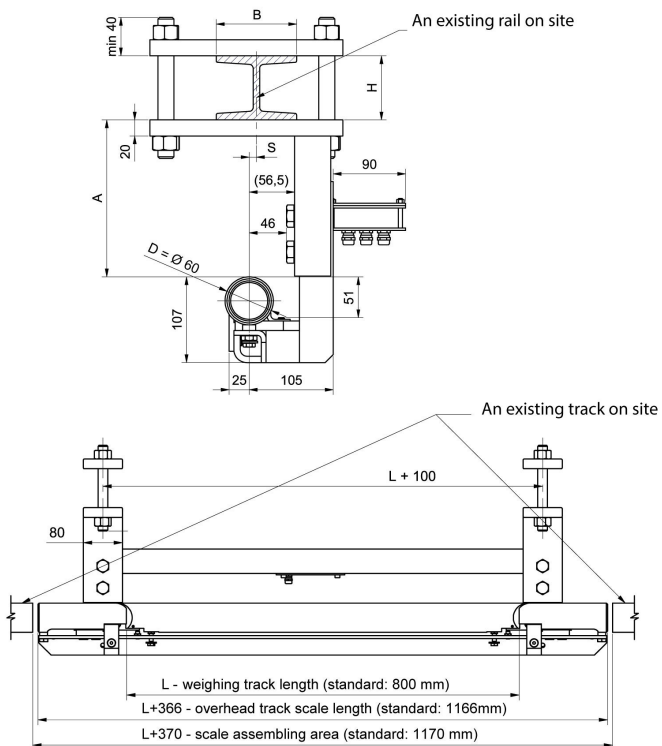
H315.2K.300/600 Overhead Track Scale, H315.2K.300/600H Overhead Track Scale



**CAUTION**

- Standard version of the weighing track length:  $L = 800 \text{ mm}$
- The truck in the place of assembling the scale has to be horizontal with a  $\pm 10 \text{ mm}$  tilt limit
- The dimensions bearing the letters are to be agreed with contractor manufacturing Z dimension; the dimensions can be omitted if the following relation is fulfilled:  $Z \leq 80\% D$

Dimensions of an overhead track scale with a shaft of  $\varnothing 60$  (standard version)



Minimum track clearance:  $A = 90 \text{ mm}$ .  
 Weighing track length:  $200 \leq L \leq 800 \text{ mm}$ . As a standard:  $L=800 \text{ mm}$ .  
 Maximum capacity:  $600 \text{ kg}$ .