



More information on the website  
[radwag.com/en/info,w1,K57](http://radwag.com/en/info,w1,K57)

MPS 6000.Y Weighing Module



MPS 6000.Y Weighing Module

The drawings, photos and graphics used are for illustrative purposes only.

## Datasheet

	MPS 6000.Y Weighing Module WX-016-0071
<b>Metrological parameters</b>	
<b>Maximum capacity [Max]</b>	6000 g
<b>Readability [d]</b>	10 mg
<b>Tare range</b>	-6000 g
<b>Physical parameters</b>	
<b>Display</b>	5,7" Resistive Color Touchscreen
<b>Weighing pan dimensions</b>	ø115 mm
<b>Device dimensions W x D x H</b>	293×190×112 mm
<b>Packaging dimensions W x D x H</b>	515×340×295 mm
<b>Net weight</b>	4,8 kg
<b>Electrical parameters</b>	
<b>Power supply</b>	100 – 240 V AC 50/60 Hz
<b>Environmental conditions</b>	
<b>Operating temperature</b>	+15 – +35 °C
<b>Relative humidity</b>	40% – 80%



## Accessories (Additional Fee)

Professional Weighing Tables  
 RS 232, RS 485 cables

RS 232 – USB Converter  
 RS 232 cables (scale - printer)

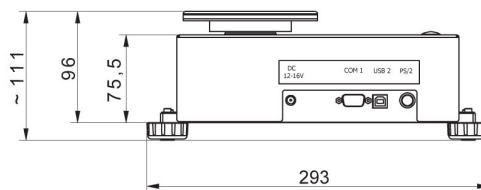
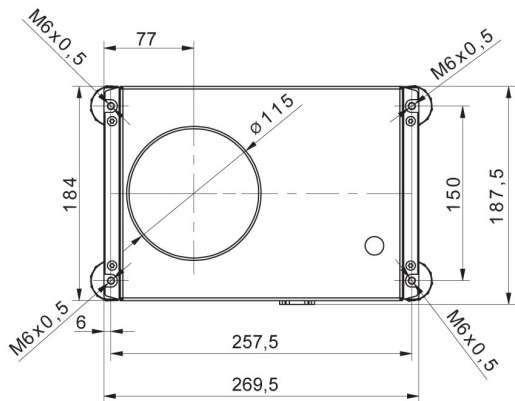
# Software (Additional Fee)

RAD-KEY  
RADWAG Development Studio

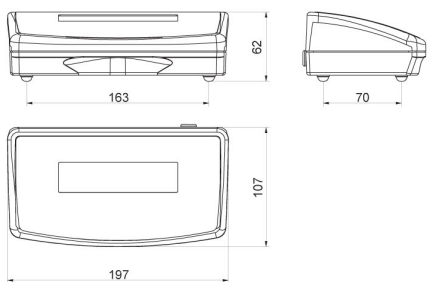
R-LAB

## Device dimensions W x D x H

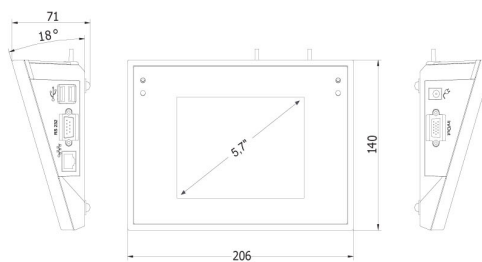
MPS 6000.Y Weighing Module



### MPS



R operator panel



Y operator panel