



SDKP Workstation for Pipettes Calibration, SDKP DUAL Workstation for Pipettes Calibration

More information on the website  
radwag.com/en/info,w1,CB2



SDKP Workstation for Pipettes Calibration



SDKP DUAL Workstation for Pipettes Calibration

The drawings, photos and graphics used are for illustrative purposes only.

## Datasheet

|                               | SDKP Workstation for Pipettes Calibration  | SDKP DUAL Workstation for Pipettes Calibration  |
|-------------------------------|--|---|
| <b>Physical parameters</b>    |  |   |
| <b>Delivery components</b>    | table for calibration, anti-vibration table, probe for temperature, humidity and pressure measurement, probe for water temperature measurement, sink for used water, armrests, LCD monitor, PC with pre-installed software PIPETTES RADWAG, power supply, keyboard and mouse, container for used water | table for calibration, anti-vibration table x2, probe for temperature, humidity and pressure measurement, probe for water temperature measurement, sink for used water, armrests, LCD monitor, PC with pre-installed software PIPETTES RADWAG, power supply, keyboard and mouse, container for used water |
| <b>Packaging dimensions</b>   | 820×1160×890 mm  | —   |
| <b>Chamber packaging size</b> |  | 820×1410×1000 mm  |
| <b>Gross weight</b>           | —  | 250 kg  |
| <b>Length</b>                 | 1100 mm  | 1350 mm   |
| <b>Width</b>                  | 750 mm   | 750 mm  |
| <b>Height</b>                 | 1100 mm  | 1100 mm   |

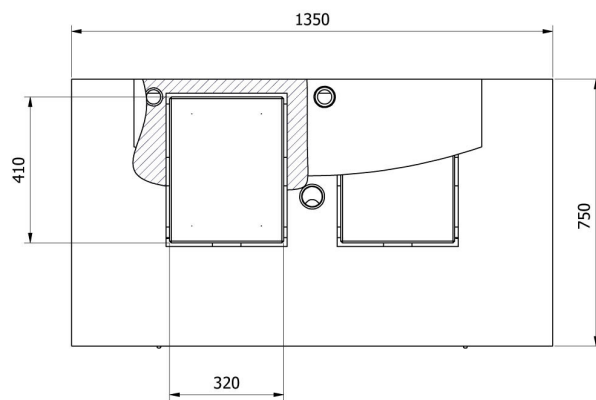
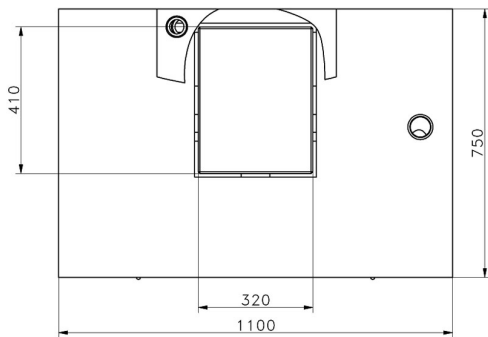
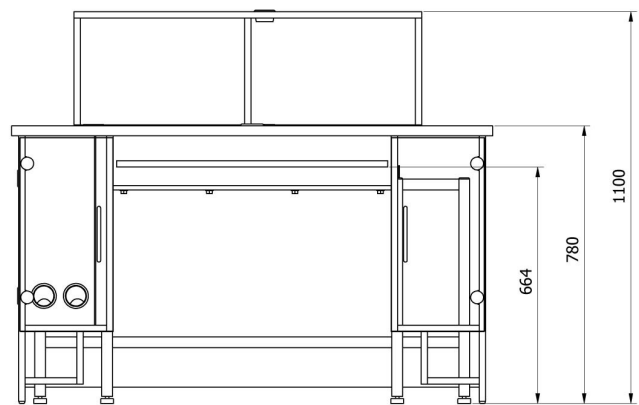
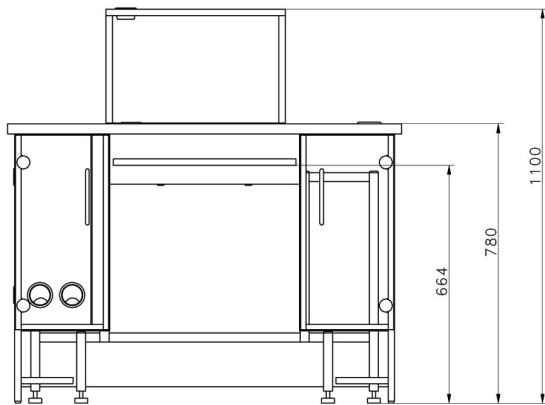
## Compatible with (Additional Fee)

XA 5Y.M.A.P Microbalance for pipettes calibration  
MYA 5Y.P Microbalance for pipettes calibration  
AS X7 Analytical Balance  
AS X2 PLUS Analytical Balances  
Pipette Tips

AS 5Y Analytical Balance  
AS R2 PLUS Analytical Balance  
AS R1 PLUS Analytical Balance  
THBR 2.0 System - Ambient Conditions Monitoring

# Device dimensions

SDKP Workstation for Pipettes Calibration, SDKP DUAL Workstation for Pipettes Calibration



—SDKP

—SDKP DUAL