



More information on the website
radwag.com/us/info,w1,ZTJ

MAS.1.21 Weighing Module



The drawings, photos and graphics used are for illustrative purposes only.

Datasheet

| | |
|---------------------------|----------|
| Maximum capacity [Max] | 21 g |
| Minimum load | 1 mg |
| Preload range | 2,1 g |
| Readability [d] | 0,01 mg |
| Tare range | -21 g |
| Minimum weight (USP) | 24 mg |
| Minimum weight (U=1%,k=2) | 2,4 mg |
| Repeatability (Max) | 0,025 mg |
| Repeatability (5% Max) | 0,012 mg |
| Linearity | ±0,06 mg |
| Stabilization time | 6 s |
| Construction | |
| Protection class | IP 54 |
| Communication interface | RS232 |

| | |
|----------------------------|-------------------------|
| Power supply | 100 – 240 V AC 50/60 Hz |
| Operating temperature | +10 ÷ +40 °C |
| Relative humidity | 40% ÷ 80% |
| Physical parameters | |
| Weighing pan dimensions | ø33 mm |
| Device dimensions | 289×143×125 mm |
| Packaging dimensions | 650×340×315 mm |
| Net weight | 4,1 kg |
| Gross weight | 6,1 kg |



Accessories

Antivibration tables
RS 232, RS 485 cables
Professional Weighing Tables

RS 232 – USB Converter
RS 232, RS 485 cables

Software

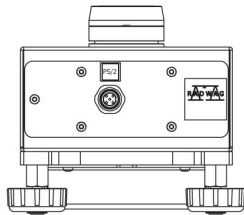
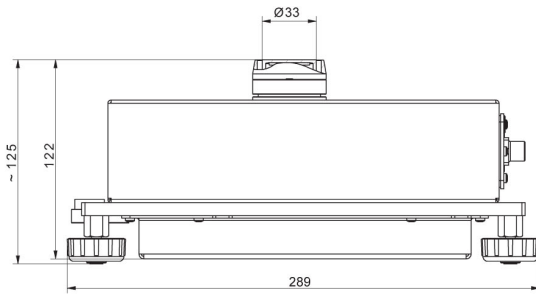
• RAD Key [WX-010-0005]
• RADWAG Development Studio [WX-010-0104]

• R Panel [WX-010-0187]

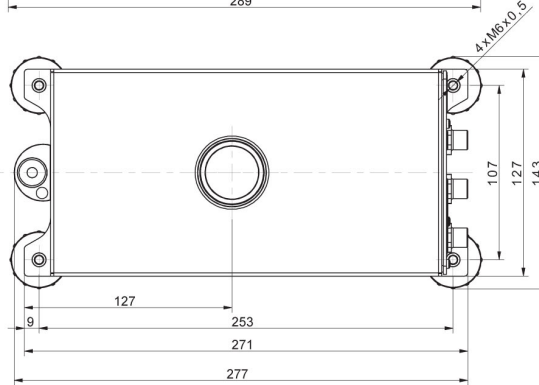
Device dimensions



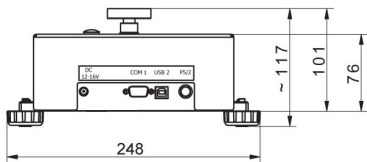
MAS.1
MAS.1.R



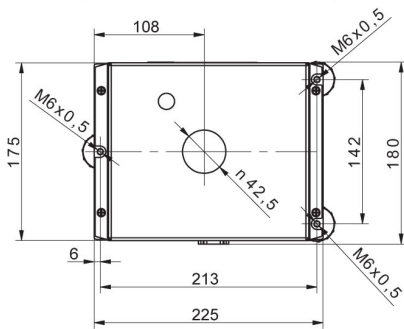
MAS.1.Y



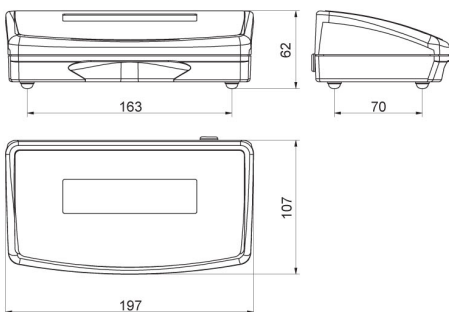
MAS.1



MAS



R operator panel



Y operator panel

