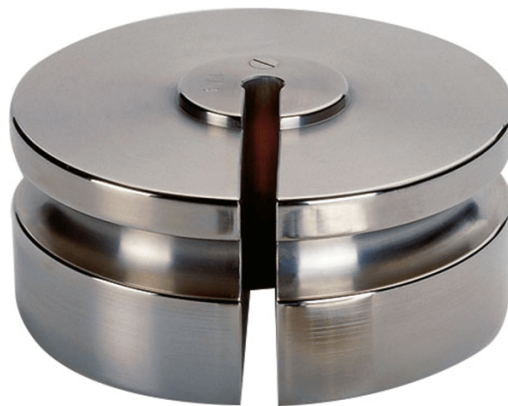




More information on the website  
[radwag.com/de/info,w1,X9P](https://radwag.com/de/info,w1,X9P)

# Prüfgewicht der F2 Klasse - Schlitzgewicht- 200 g

OS-101-0028



The drawings, photos and graphics used are for illustrative purposes only.

## Technische Daten

### Messtechnische Parameter

OIML-Klasse	F2
Nominalwert	200 g

## Kompatibel mit (Additional Fee)

Pinzetten	Pinsetl
-----------	---------