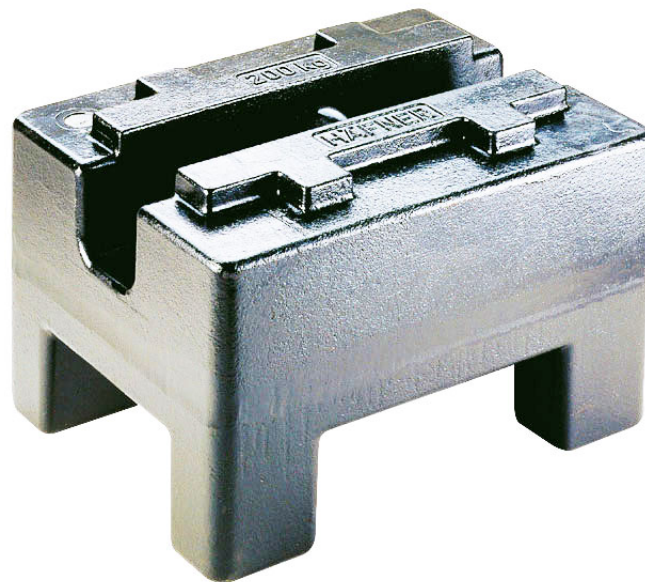




More information on the website  
[radwag.com/it/info,w1,VA6](http://radwag.com/it/info,w1,VA6)

# Pesi standard M1 - rettangolare - 2000 kg

OP-403-0107



The drawings, photos and graphics used are for illustrative purposes only.

## Specifiche

### Parametri metrologici

Classe OIML	M1
Valore nominale	2000 kg

## Compatibile con (Additional Fee)

Pennelli