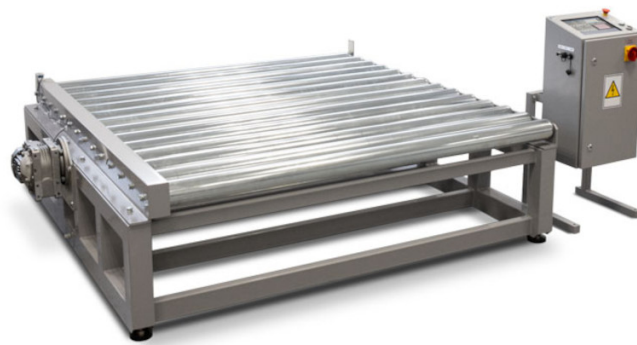




More information on the website
radwag.com/us/info,w1,SPT

DWT/RC R Checkweigher



The drawings, photos and graphics used are for illustrative purposes only.

Datasheet

Maximum capacity [Max]	6000 kg
Minimum load	2 kg
Readability [d]	0,05 kg
Tare range	-6000 kg
Physical parameters	
Display	10" graphic colour touchscreen
Construction	
Protection class	IP 55/56
Communication interface	RS232, RS485, Ethernet, Profinet, Profibus, Modbus, ASCII
Power supply	230/400 V AC 50/60 Hz
Operating temperature	-10 ÷ +40 °C

Features of use

Conveyor velocity

0,1 ÷ 0,5 m/s



Accessories

Displays

RS 232 cables (scale - ZEBRA printer)

RS 232, RS 485 cables

Label Printers

Receipt Printer

USB cable (scale - printer)