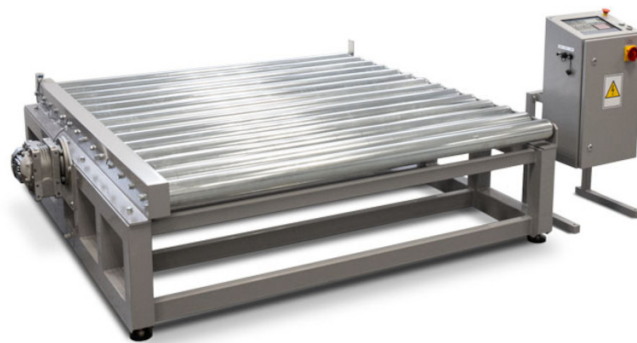




More information on the website  
[radwag.com/en/info,w1,SPT](http://radwag.com/en/info,w1,SPT)

# DWT/RC R Checkweigher



The drawings, photos and graphics used are for illustrative purposes only.

## Datasheet

Metrological parameters	
Maximum capacity [Max]	6000 kg
Minimum load	2 kg
Readability [d]	0.05 kg
Tare range	-6000 kg
Physical parameters	
Display	10" graphic colour touchscreen
Construction	
Protection class	IP 55 / 56
Communication interface	
Communication interface	RS232, RS485, Ethernet, Profinet, Profibus, Modbus, ASCII
Electrical parameters	
Power supply	230/400 V AC 50/60 Hz

## Environmental conditions

Operating temperature -10 – +40 °C

## Features of use

Conveyor velocity 0.1 – 0.5 m/s



## Accessories

### Displays

RS 232 cables (scale - ZEBRA printer)

RS 232, RS 485 cables

### Label Printers

Receipt Printer

USB cable (scale - printer)