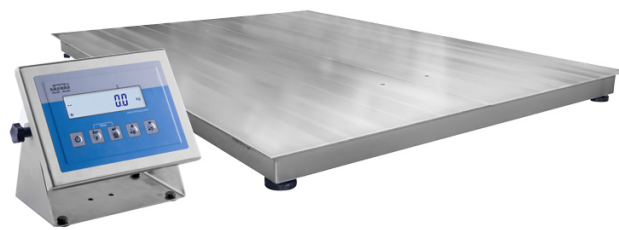




More information on the website  
radwag.com/en/info,w1,S54

# H315.4.600.H7 Stainless Steel Platform Scale



The drawings, photos and graphics used are for illustrative purposes only.

## Functions

 Plus/Minus Control

 Percent Weighing

 Totalizing

 Parts counting

 Internal battery

 Peak hold

 Newton unit measurement

 Animal weighing

## Datasheet

### Metrological parameters

|  |         |
|--|---------|
| Maximum capacity [Max]                 | 600 kg  |
| Minimum load                           | 4 kg    |
| Readability [d]                        | 200 g   |
| Verification unit [e]                  | 200 g   |
| Tare range                             | -600 kg |
| Max readability for non-verified scale | 50 g    |
| OIML Class                             | III     |

### Physical parameters

|         |               |
|---------|---------------|
| Display | LCD (backlit) |
|---------|---------------|

| Physical parameters         |   |
|-----------------------------|---|
| Cable length                | 3 m   |
| Weighing pan dimensions     | 1000×1000 mm  |
| Weighing platform height    | 88 mm   |
| Packaging dimensions        | 1100×1100×430 mm  |
| Scale mass with indicator   | 84 kg   |
| Gross weight                | 110 kg  |
| Construction                |   |
| Protection class            | IP 68 construction, IP 68 (1h max)/69 terminal                  |
| Communication interface     |   |
| Communication interface     | RS232, USB  |
| Optional interfaces         | RS232 or RS485 or 4IN/4OUT or Ethernet or analog output 4-20 mA |
| Electrical parameters       |   |
| Power supply                | 100 – 240 V AC 50/60 Hz   |
| Optional power supply       | internal rechargeable battery                                   |
| Operation time on batteries | max 7h  |
| Environmental conditions    |   |
| Operating temperature       | -10 – +40 °C  |
| Relative humidity           | 10% – 85% RH no condensation                                    |



Extra payment for verification



## Accessories

RS 232 cables (scale - printer)  
Ramps  
Displays  
RS 232 cables (scale - Ethernet)  
RS 232, RS 485 cables  
Frame for embedded scales  
RS 232 – Ethernet Converter

USB adapter  
Receipt Printer  
USB cable (scale - printer)  
Stands, wall mounting kits and mounting brackets  
RS 232 – USB Converter  
RS 232, RS 485 cables

## Software

- RAD Key [WX-010-0005]
- R-Lab [WX-010-0080]

- R-Panel [WX-010-0187]
- Scale Editor 2.1 [WX-010-0173]

## Device dimensions



| Scale type       | A [mm] | B [mm] | C [mm] |
|------------------|--------|--------|--------|
| H315.4.300.H6    | 800    | 800    | 88 ±2  |
| H315.4.600.H6    | 800    | 800    | 88 ±2  |
| H315.4.300.H7    | 1000   | 1000   | 88 ±2  |
| H315.4.600.H7    | 1000   | 1000   | 88 ±2  |
| H315.4.1500.H7   | 1000   | 1000   | 88 ±2  |
| H315.4.1500.H8   | 1200   | 1200   | 88 ±2  |
| H315.4.3000.H8   | 1200   | 1200   | 111 ±2 |
| H315.4.1500.H8/9 | 1200   | 1500   | 88 ±2  |
| H315.4.3000.H8/9 | 1200   | 1500   | 111 ±2 |
| H315.4.1500.H9   | 1500   | 1500   | 88 ±2  |
| H315.4.3000.H9   | 1500   | 1500   | 111 ±2 |
| H315.4.3000.H10  | 1500   | 2000   | 111 ±2 |
| H315.4.6000.H10  | 1500   | 2000   | 166 ±2 |