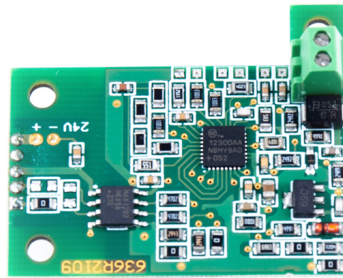




More information on the website
radwag.com/us/info,w1,S1E

Analog output module (PUE H315)

WX-016-0276



The drawings, photos and graphics used are for illustrative purposes only.

Overview

The analog output module converts the scale output signal (mass) into an analog signal. The mass value is most often represented in the form of a 4-20 mA current signal. Due to the low resolution of the module (several thousand), such a signal is used in automation for processes that do not require high precision.

Analog output module is available in: IM01.EX-2 communication module and MW01-A7 weighing module, and for an extra charge in PUE H315 terminals.

Compatible with (Additional Fee)

PUE H315 Terminal