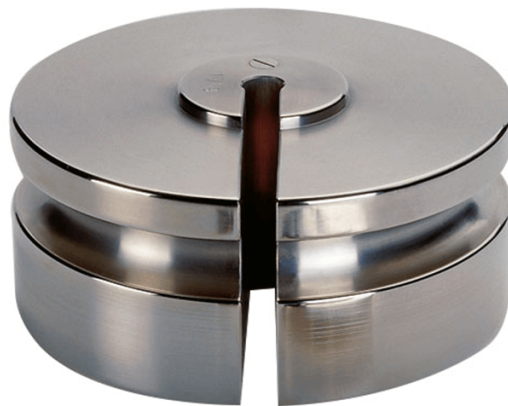




More information on the website  
[radwag.com/de/info,w1,QUU](http://radwag.com/de/info,w1,QUU)

# Prüfgewicht der F2 Klasse - Schlitzgewicht- 5 kg

OS-101-0032



The drawings, photos and graphics used are for illustrative purposes only.

## Technische Daten

### Messtechnische Parameter

|             |      |
|-------------|------|
| OIML-Klasse | F2   |
| Nominalwert | 5 kg |

## Kompatibel mit (Additional Fee)

Pinsel