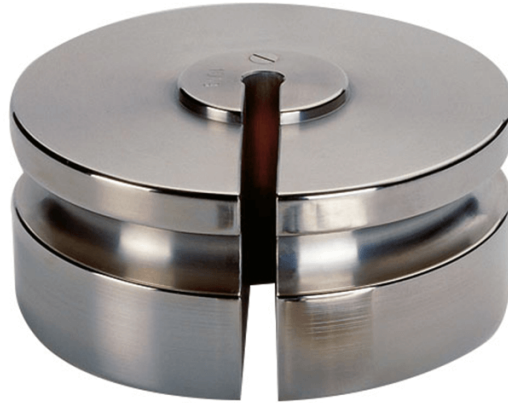




More information on the website  
[radwag.com/en/info,w1,P2V](https://radwag.com/en/info,w1,P2V)

## F2 Mass Standard - Slotted Weights - 1 kg



The drawings, photos and graphics used are for illustrative purposes only.

### Datasheet

#### Metrological parameters

OIML Class	F2
Nominal value	1 kg

### Compatible with

Brushes