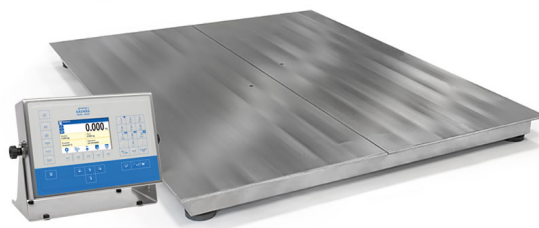




More information on the website  
radwag.com/en/info,w1,0UD

# HX5.EX-1.4.600.H7 4 Load Cell Platform Scale



The drawings, photos and graphics used are for illustrative purposes only.

## Functions



Labelling



Plus/Minus Control



Percent Weighing



Parts counting



Newton unit measurement



Statistics



GLP Procedures



Replaceable unit



ALIBI Memory

## Datasheet

Metrological parameters	
Maximum capacity [Max]	600 kg
Minimum load	4 kg
Readability [d]	200 g
Tare range	-600 kg
OIML Class	III
Physical parameters	
Display	5" graphic colour

Physical parameters	
Cable length	3 m
Weighing pan dimensions	1000×1000 mm
Net weight	87.8 kg
Gross weight	88 kg
Construction	
Protection class	IP 68 construction, IP 66 / 68 terminal
Construction	Stainless steel AISI304
ATEX Certification	II 2G Ex ib IIC T4 Gb II 2D Ex ib IIIC T135°C Db
IECEX Certification	Ex ib IIC T4 Gb Ex ib IIIC T135°C Db
Indicator	PUE HX5.EX-1
Communication interface	
Communication interface	2×RS232, RS485
Electrical parameters	
Power supply	100 – 240 V AC 50/60 Hz
Power consumption max.	15 W
Environmental conditions	
Operating temperature	-10 – +40 °C
Relative humidity	10% – 85% RH no condensation



Extra payment for verification



## Accessories

Communication Modules  
Ex-Scale-Intended Intrinsically Safe Power Supply for PUE HX5.EX  
Weighing Terminal

Receipt Printer

## Software

- E2R Weighing [WX-010-0099]
- RAD Key [WX-010-0005]
- Alibi Reader [WX-010-0114]
- Scale Editor 2.1 [WX-010-0173]

- E2R Weighing Records [WX-010-0038]
- Label Editor R02 [WX-010-0094]
- R-Lab [WX-010-0080]
- RADWAG Development Studio [WX-010-0104]