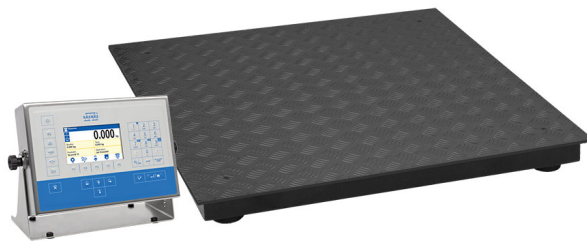




More information on the website
radwag.com/us/info,w1,FY7

HX5.EX-1.4.300.C6 4 Load Cell Platform Scale



The drawings, photos and graphics used are for illustrative purposes only.

Functions



Labelling



Plus/Minus Control



Percent Weighing



Parts counting



Newton unit measurement



Statistics



GLP Procedures



Replaceable unit



ALIBI Memory

Datasheet

| | |
|----------------------------|-------------------|
| Maximum capacity [Max] | 300 kg |
| Minimum load | 2 kg |
| Readability [d] | 100 g |
| Tare range | -300 kg |
| Physical parameters | |
| Display | 5" graphic colour |
| Weighing pan dimensions | 800x800 mm |

| Physical parameters | |
|-------------------------|---------------------------------------|
| Net weight | 62,8 kg |
| Gross weight | 63 kg |
| Cable length | 3 m |
| ATEX Certification | II 2G Ex ib IIB T4 Gb |
| IECEX Certification | Ex ib IIB T4 Gb |
| Indicator | PUE HX5.EX-1 |
| Construction | |
| Protection class | IP 65 construction, IP 66/68 terminal |
| Construction | mild steel St3S |
| Communication interface | 2×RS232, RS485 |
| Power supply | 100 – 240 V AC 50/60 Hz |
| Power consumption max. | 15 W |
| Operating temperature | -10 ÷ +40 °C |
| Relative humidity | 10% – 85% RH no condensation |



Extra payment for verification



Accessories

Communication modules
 Ex-Scale-Intended Intrinsically Safe Power Supply for PUE HX5.EX
 Weighing Terminal

Receipt Printer

Software

- E2R Weighing [WX-010-0099]
- RAD Key [WX-010-0005]
- Alibi Reader PC Software [WX-010-0114]
- RADWAG Development Studio [WX-010-0104]

- E2R Weighing Records [WX-010-0038]
- Label Editor R02 [WX-010-0094]
- Scale Editor - EWAG 2.1 [WX-010-0173]