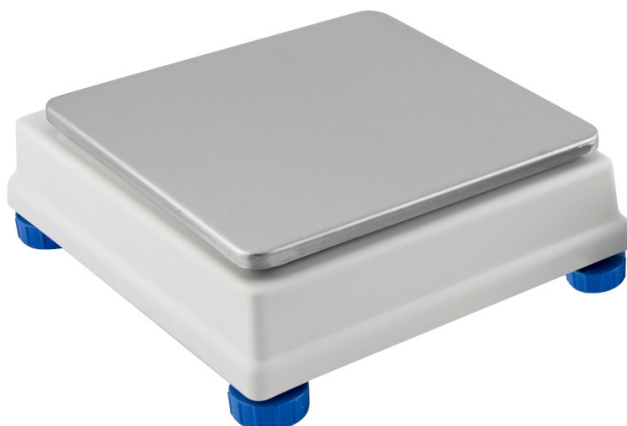




More information on the website  
[radwag.com/it/info,w1,F1W](http://radwag.com/it/info,w1,F1W)

## Piattaforma PL 1,5/3/D2



The drawings, photos and graphics used are for illustrative purposes only.

### Specifiche

Parametri metrologici	
Portata massima [Max]	1,5 / 3 kg
Divisione [d]	1 g
Costruzione	
Punteggio IP	IP 43
Struttura	ABS plastic
Materiale da pesata	Stainless steel AISI304
Parametri fisici	
Dimensione piatto	195×195 mm
Dimensioni del pacco	530×310×150 mm

**Precisione di lettura** - valore previsto, a seconda dei parametri del trasmettitore di misura utilizzato.

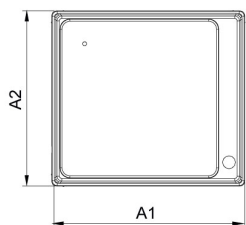


### Accessori

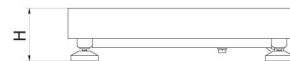
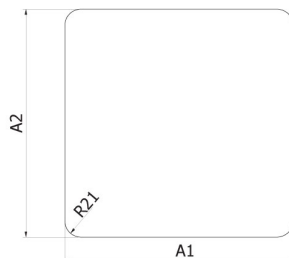
Bilance CY10 per controllo CPC  
 Terminale di pesata PUE CY10  
 Bilancia multifunzione CY10  
 Terminale di pesata PUE 5  
 Bilancia di precisione CY10

Terminale di pesata PUE C32  
 Terminale di pesata PUE 7.1  
 Terminale di pesata PUE HX7  
 Terminale di pesata PUE HY10  
 RS 232 – USB Converter

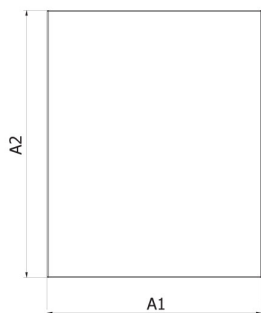
## Device dimensions



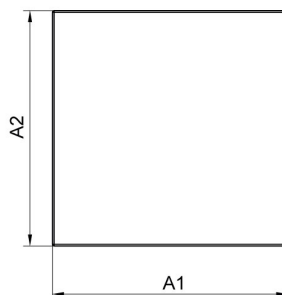
PL/D2



PLC/F1



PLC/C2  
PLC/C3



PL/H  
PL/HR

Platform type	A1	A2	H
PL/D2	238	216	82±3
PLC/F1	300	300	70±3
PLC/C2	402	502	103±3
PLC/C3	701	501	130±5
PL/H1 / PL/HR1	150	200	85±3
PL/H2 / PL/HR2	250	300	103±3
PL/H3 / PL/HR/3	410	410	98±3
PL/H3/5 / PL/HR/3/5	400	600	155±3
PL/H4 / PL/HR/4	500	500	155±3
PL/H5 / PL/HR/5	600	600	155±3
PL/H6	800	800	135±3

dimensions in mm