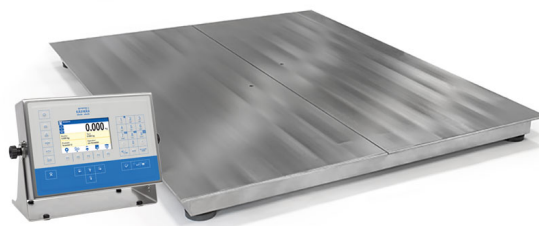




More information on the website
radwag.com/en/info,w1,EVJ

HX5.EX-1.4.1500.H7 4 Load Cell Platform Scale



The drawings, photos and graphics used are for illustrative purposes only.

Functions



Labelling



Plus/Minus Control



Percent Weighing



Parts counting



Newton unit measurement



Statistics



GLP Procedures



Replaceable unit



ALIBI Memory

Datasheet

| Metrological parameters | |
|-------------------------|-------------------|
| Maximum capacity [Max] | 1500 kg |
| Minimum load | 10 kg |
| Readability [d] | 500 g |
| Tare range | -1500 kg |
| OIML Class | III |
| Physical parameters | |
| Display | 5" graphic colour |

| Physical parameters | |
|--------------------------|---|
| Weighing pan dimensions | 1000×1000 mm |
| Net weight | 87.8 kg |
| Gross weight | 88 kg |
| Cable length | 3 m |
| ATEX Certification | II 2G Ex ib IIC T4 Gb II 2D Ex ib IIIC T135°C Db |
| IECEX Certification | Ex ib IIC T4 Gb Ex ib IIIC T135°C Db |
| Indicator | PUE HX5.EX-1 |
| Construction | |
| Protection class | IP 68 construction, IP 66/68 terminal |
| Construction | Stainless steel AISI304 |
| Communication interface | |
| Communication interface | 2×RS232, RS485 |
| Electrical parameters | |
| Power supply | 100 – 240 V AC 50/60 Hz |
| Power consumption max. | 15 W |
| Environmental conditions | |
| Operating temperature | -10 ÷ +40 °C |
| Relative humidity | 10% – 85% RH no condensation |



Extra payment for verification



Accessories

Communication Modules
Ex-Scale-Intended Intrinsically Safe Power Supply for PUE HX5.EX
Weighing Terminal

Receipt Printer

Software

- E2R Weighing [WX-010-0099]
- RAD Key [WX-010-0005]
- Alibi Reader [WX-010-0114]
- Scale Editor 2.1 [WX-010-0173]

- E2R Weighing Records [WX-010-0038]
- Label Editor R02 [WX-010-0094]
- R-Lab [WX-010-0080]
- RADWAG Development Studio [WX-010-0104]