



More information on the website
radwag.com/fr/info,w1,DI5

Module de balance MAS.1.51.Y



The drawings, photos and graphics used are for illustrative purposes only.

Paramètres Techniques

| Paramètres métrologiques | |
|----------------------------|--------------------------------|
| Capacité maximale [Max] | 51 g |
| Capacité minimale [Min] | 1 mg |
| Précision de lecture | 0,01 mg |
| Étendue de tare | -51 g |
| Pesée minimale USP | 24 mg |
| Pesée minimale (U=1%, k=2) | 2,4 mg |
| Répétabilité (Max) | 0,025 mg |
| Répétabilité (5% Max) | 0,012 mg |
| Linéarité | ±0,06 mg |
| Temps de stabilisation | 6 s |
| Paramètres physiques | |
| Afficheur | 5,7" Resistiv-Farb-Touchscreen |
| Dimension du plateau | ø33 mm |
| Dimensions d'appareil | 289×143×125 mm |
| Dimensions de colis | 650×340×315 mm |

| Paramètres physiques | |
|------------------------------|---|
| Masse nette | 4,7 kg |
| Masse brute | 6,7 kg |
| Construction | |
| Degré de protection | IP 54 |
| Interface de Communication | |
| Interface de Communication | 2×RS232, 2×USB-A, Ethernet, 4 IN / 4 OUT (digital), Wi-Fi |
| Paramètres électriques | |
| Alimentation | 100 – 240 V AC 50/60 Hz |
| Conditions environnementales | |
| Température du travail | +10 ÷ +40 °C |
| Humidité relative d'air | 40% ÷ 80% |

* Wi-Fi® is a registered trademark of Wi-Fi® Alliance.



Accessoires

Tables antivibratoires
Tables de balance professionnelle
Câbles RS 232, RS 485

Convertisseur RS 232 – USB
Câbles RS 232 (balance – imprimante)

Software

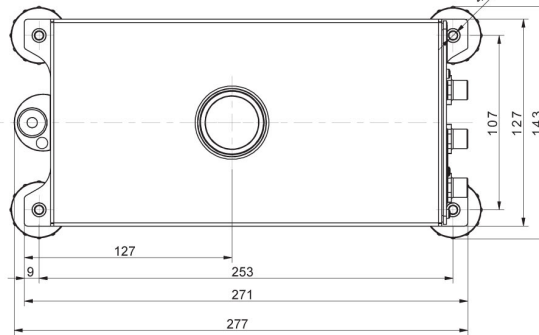
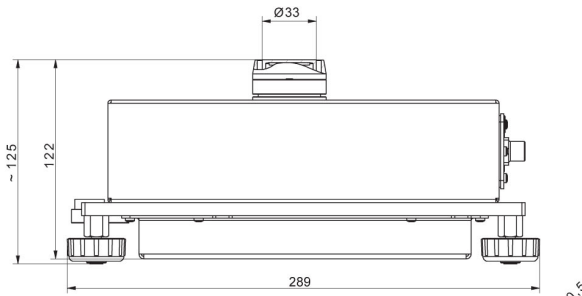
- RAD Key [WX-010-0005]
- R-LAB [WX-010-0080]

- R Panel [WX-010-0187]
- RADWAG Studio du Développement [WX-010-0104]

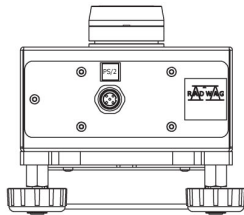
Dimensions d'appareil



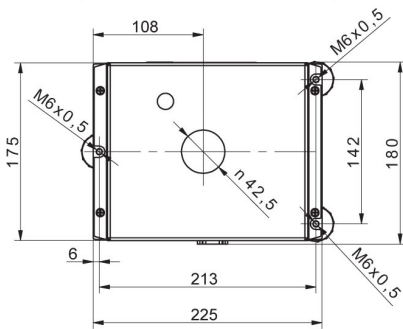
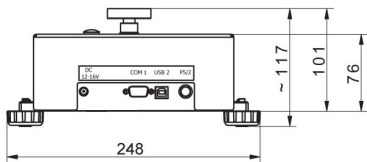
MAS.1
MAS.1.R



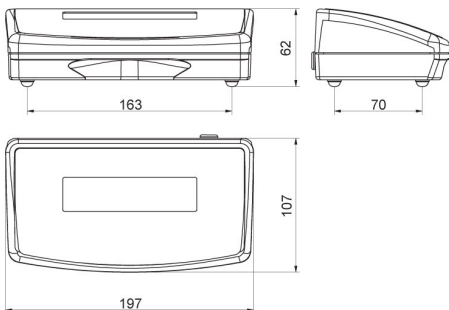
MAS.1



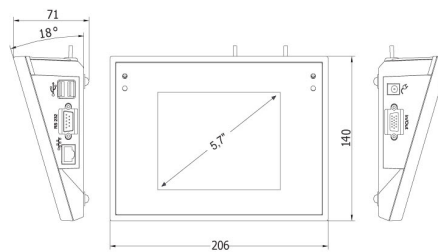
MAS.1.Y



MAS



R operator panel



Y operator panel