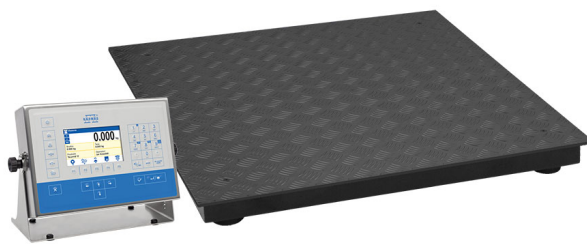




More information on the website  
[radwag.com/us/info,w1,CPN](http://radwag.com/us/info,w1,CPN)

# HX5.EX-1.4.60.C6 4 Load Cell Platform Scale

WW-008-0001



The drawings, photos and graphics used are for illustrative purposes only.

## Functions



Labelling



Plus/Minus Control



Percent Weighing



Parts counting



Newton unit measurement



Statistics



GLP Procedures



Replaceable unit



ALIBI Memory

## Datasheet

Maximum capacity [Max]	60 kg
Minimum load	400 g
Readability [d]	20 g
Tare range	-60 kg
<b>Physical parameters</b>	
Display	5" graphic colour
Cable length	3 m

Physical parameters	
Weighing pan dimensions	800×800 mm
Net weight	62,8 kg
Gross weight	63 kg
Construction	
Protection class	IP 65 construction, IP 67 cell, IP 66 / 68 terminal
ATEX Certification	II 2G Ex ib IIB T4 Gb
IECEX Certification	Ex ib IIB T4 Gb
Construction	mild steel St3S
Communication interface	
Communication interface	2×RS232, RS485
Power supply	
Power supply	100 – 240 V AC 50/60 Hz
Power consumption max.	15 W
Operating temperature	
Operating temperature	-10 – +40 °C
Relative humidity	
Relative humidity	10% – 85% RH no condensation
Indicator	
Indicator	PUE HX5.EX-1



Additional fee for verification



## Accessories (Additional Fee)

Communication modules  
 Ex-Scale-Intended Intrinsically Safe Power Supply for PUE HX5.EX  
 Weighing Terminal

Receipt Printer

## Software (Additional Fee)

- E2R Weighing [WX-010-0099]
- RAD Key [WX-010-0005]
- Alibi Reader PC Software [WX-010-0114]
- RADWAG Development Studio [WX-010-0104]

- E2R Weighing Records [WX-010-0038]
- Label Editor R02 [WX-010-0094]
- Scale Editor - EWAG 2.1 [WX-010-0173]