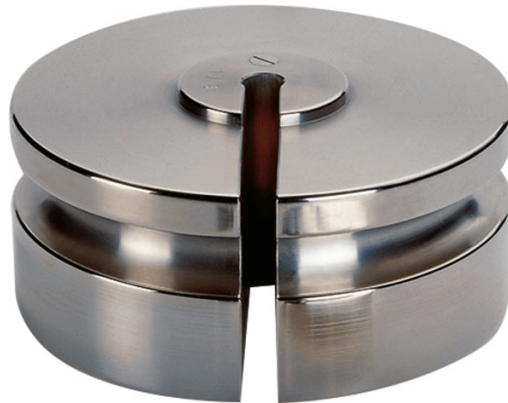




More information on the website  
[radwag.com/it/info,w1,5JD](http://radwag.com/it/info,w1,5JD)

## Pesi standard F2 - asolata - 20 kg



The drawings, photos and graphics used are for illustrative purposes only.

### Foglio di calcolo

#### Parametri metrologici

Classe OIML	F2
Valore nominale	20 kg

### Compatibile con

Pennelli