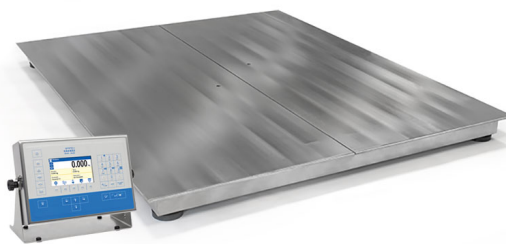




More information on the website
radwag.com/us/info,w1,5IZ

HX5.EX-1.4.3000.H8 4 Load Cell Platform Scale



The drawings, photos and graphics used are for illustrative purposes only.

Functions



Labelling



Plus/Minus Control



Percent Weighing



Parts counting



Newton unit measurement



Statistics



GLP Procedures



Replaceable unit



ALIBI Memory

Datasheet

Maximum capacity [Max]	3000 kg
Minimum load	20 kg
Readability [d]	1000 g
Tare range	-3000 kg
OIML Class	III
Physical parameters	
Display	5" graphic colour

Physical parameters	
Cable length	3 m
Weighing pan dimensions	1200×1200 mm
Net weight	127,8 kg
Gross weight	128 kg
Construction	
Protection class	IP 68 construction, IP 66 / 68 terminal
Construction	Stainless steel AISI304
ATEX Certification	II 2G Ex ib IIC T4 Gb II 2D Ex ib IIIC T135°C Db
IECEX Certification	Ex ib IIC T4 Gb Ex ib IIIC T135°C Db
Indicator	PUE HX5.EX-1
Communication interface	2×RS232, RS485
Power supply	100 – 240 V AC 50/60 Hz
Power consumption max.	15 W
Operating temperature	-10 – +40 °C
Relative humidity	10% – 85% RH no condensation



Extra payment for verification



Accessories

Communication modules

Ex-Scale-Intended Intrinsically Safe Power Supply for PUE HX5.EX

Weighing Terminal

Receipt Printer

Software

- E2R Weighing [WX-010-0099]
- RAD Key [WX-010-0005]
- Alibi Reader PC Software [WX-010-0114]
- RADWAG Development Studio [WX-010-0104]

- E2R Weighing Records [WX-010-0038]
- Label Editor R02 [WX-010-0094]
- Scale Editor - EWAG 2.1 [WX-010-0173]