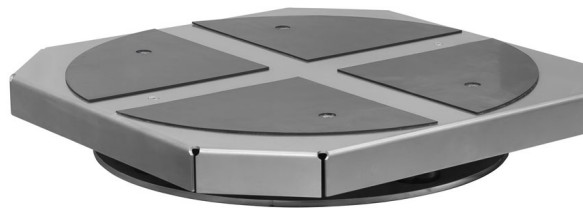




More information on the website  
[radwag.com/en/info,w1,4CW](https://radwag.com/en/info,w1,4CW)

# Self-Centering Pan for HRP 1000 Mass Comparator

WX-001-0137



The drawings, photos and graphics used are for illustrative purposes only.

## Overview

Self-centering weighing pan of a floating nature is intended for HRP KO comparator. It is used interchangeably with a standard weighing pan. The "floating" weighing pan is installed in course of a manufacturing process therefore remember to order it when purchasing the HRP KO comparator as it is not sold separately.

The pan has been designed to aid the operator stabilize and level weights that are located eccentrically. Additionally it helps to place eccentrically group of weights, total mass of which equals reference weight mass.

## Compatible with (Additional Fee)

HRP 5Y.KO Mass Comparator