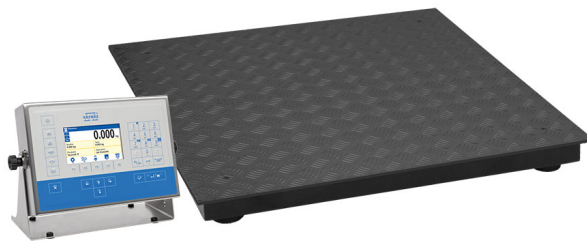




More information on the website
radwag.com/en/info,w1,1BC

HX5.EX-1.4.150.C6 4 Load Cell Platform Scale



The drawings, photos and graphics used are for illustrative purposes only.

Functions



Labelling



Plus/Minus Control



Percent Weighing



Parts counting



Newton unit measurement



Statistics



GLP Procedures



Replaceable unit



ALIBI Memory

Datasheet

Metrological parameters	
Maximum capacity [Max]	150 kg
Minimum load	1 kg
Readability [d]	50 g
Tare range	-150 kg
Physical parameters	
Display	5" graphic colour
Cable length	3 m

Physical parameters	
Weighing pan dimensions	800×800 mm
Net weight	62.8 kg
Gross weight	63 kg
Construction	
Protection class	IP 65 construction, IP 66/68 terminal
Construction	mild steel St3S
ATEX Certification	II 2G Ex ib IIB T4 Gb
IECEX Certification	Ex ib IIB T4 Gb
Indicator	PUE HX5.EX-1
Communication interface	
Communication interface	2×RS232, RS485
Electrical parameters	
Power supply	100 – 240 V AC 50/60 Hz
Power consumption max.	15 W
Environmental conditions	
Operating temperature	-10 – +40 °C
Relative humidity	10% – 85% RH no condensation



Extra payment for verification



Accessories

Communication Modules
 Ex-Scale-Intended Intrinsically Safe Power Supply for PUE HX5.EX
 Weighing Terminal

Receipt Printer

Software

- E2R Weighing [WX-010-0099]
- RAD Key [WX-010-0005]
- Alibi Reader [WX-010-0114]
- Scale Editor 2.1 [WX-010-0173]

- E2R Weighing Records [WX-010-0038]
- Label Editor R02 [WX-010-0094]
- R-Lab [WX-010-0080]
- RADWAG Development Studio [WX-010-0104]